

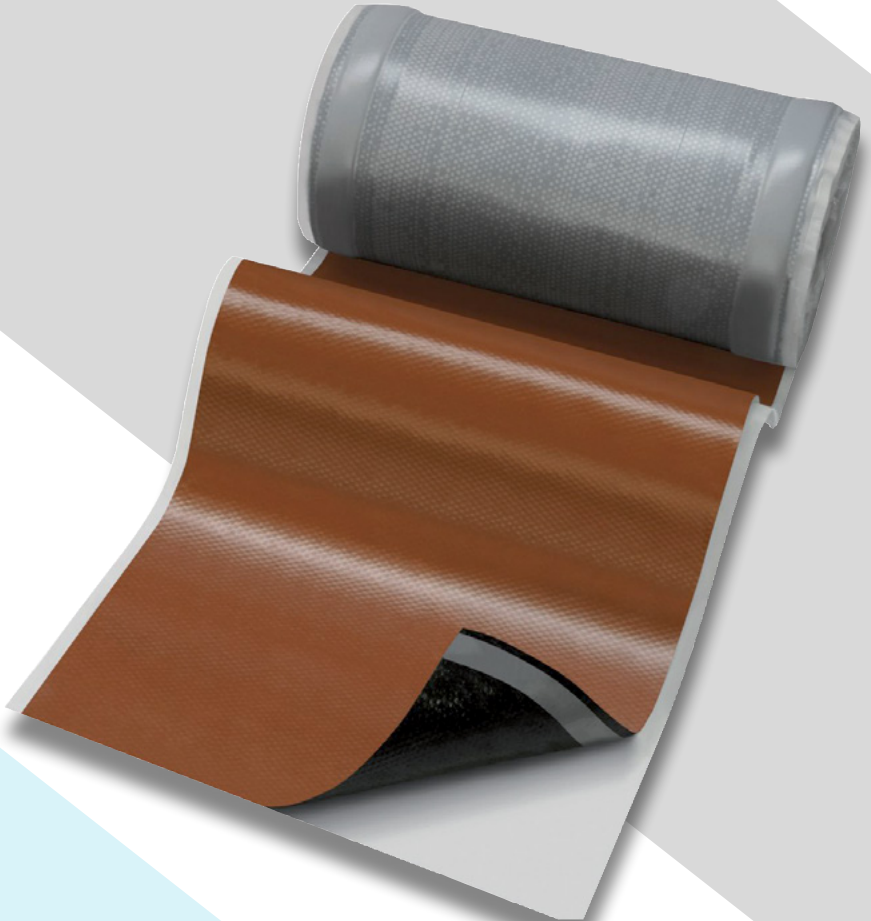
The specialists  
in lead-free applications

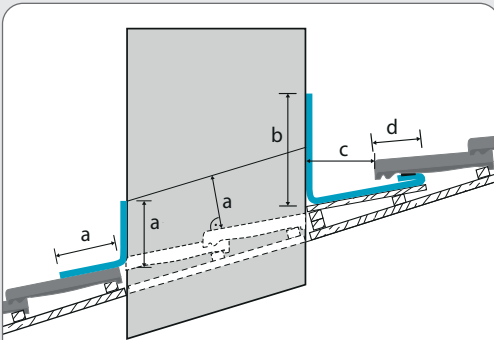
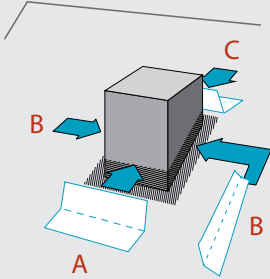
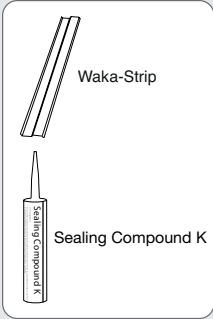
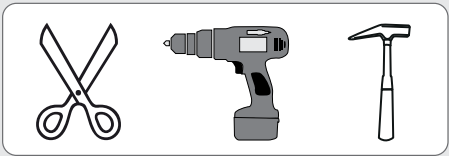
 Haus Profi™

 Wakaflex®

# Wakaflex® Fitting Instructions

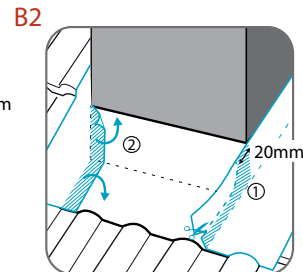
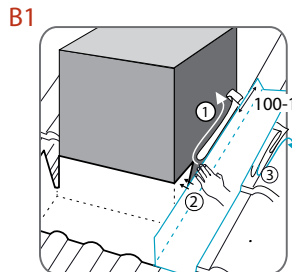
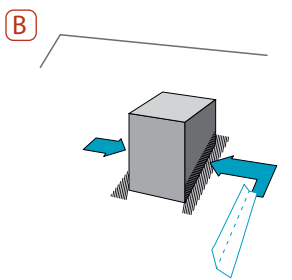
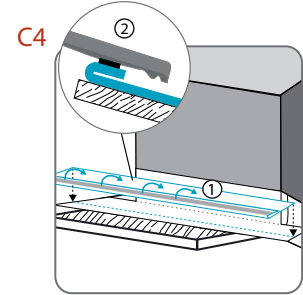
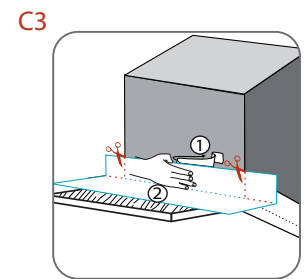
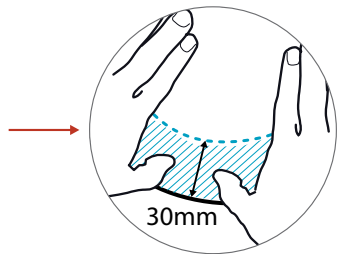
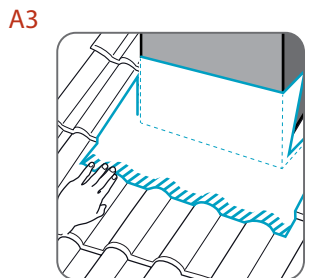
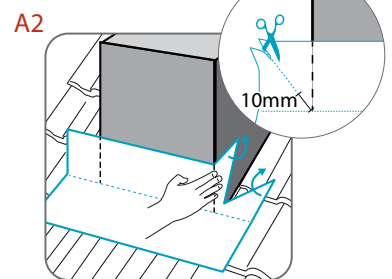
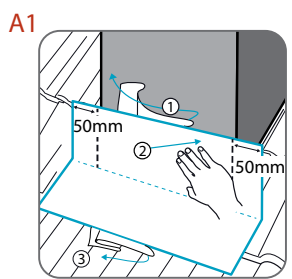
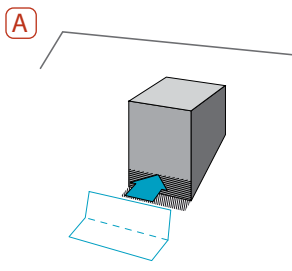
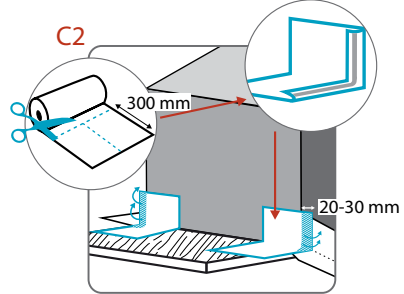
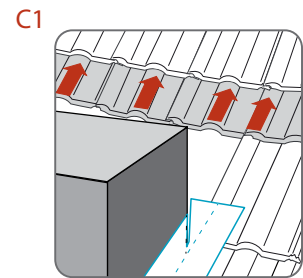
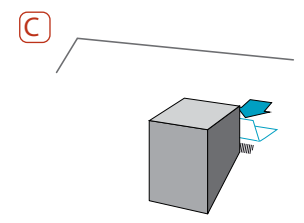
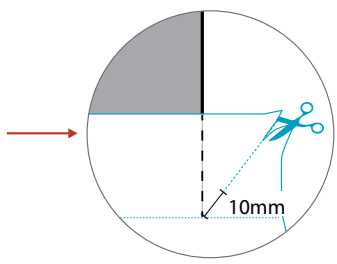
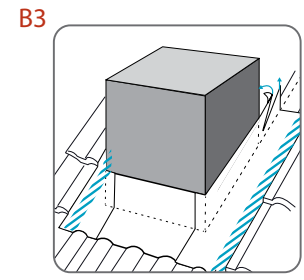
Example Chimney





|             | a   | b   | c   | d   |
|-------------|-----|-----|-----|-----|
| > 22°       | 80  | 150 | 100 | 100 |
| > 15° - 22° | 100 | 150 | 100 | 150 |
| 7° - 15°    | 100 | 150 | 100 | 200 |

\*Please note the general rules for Wakaflex®



The complete range of lead-free  
applications and accessories

 **EasyFlash**®

 **Wakaflex**®

 **HPaccessories**

 **Sabetoflex**

 **Haus Profi**™  
The specialists in lead-free applications

**Haus Profi**  
Unit 6F, East Midlands Distribution Centre  
Short Lane, Castle Donington  
Derbyshire, DE74 2HA, UK  
email: [info@haus-profi.co.uk](mailto:info@haus-profi.co.uk)  
[www.roof-flashing.info](http://www.roof-flashing.info)

tel: 0845 600 4427  
fax: 01332 813 082

 [@HausProfiUK](https://twitter.com/HausProfiUK)

**Haus Profi**™ is a brand of **Klober Ltd.**