

The specialists
in lead-free applications

 Haus Profi™

 EasyFlash®

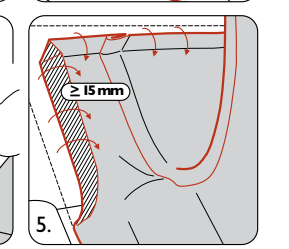
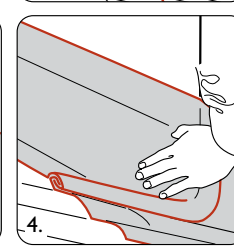
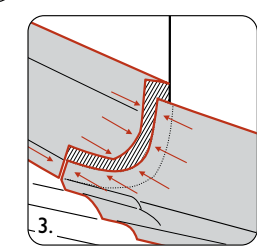
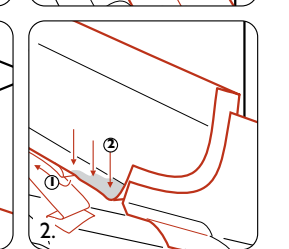
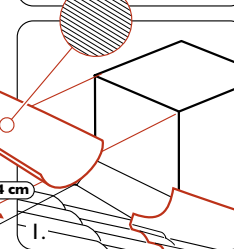
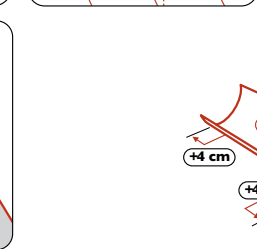
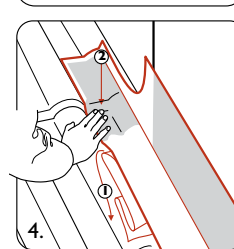
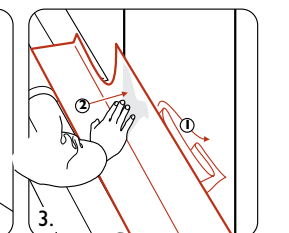
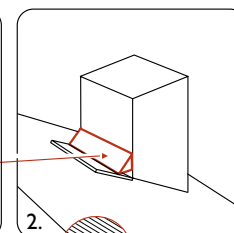
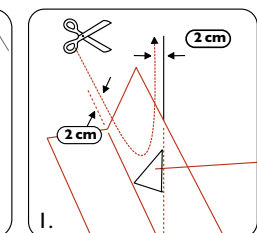
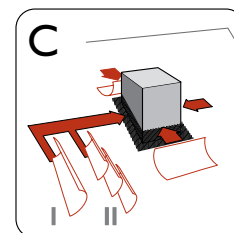
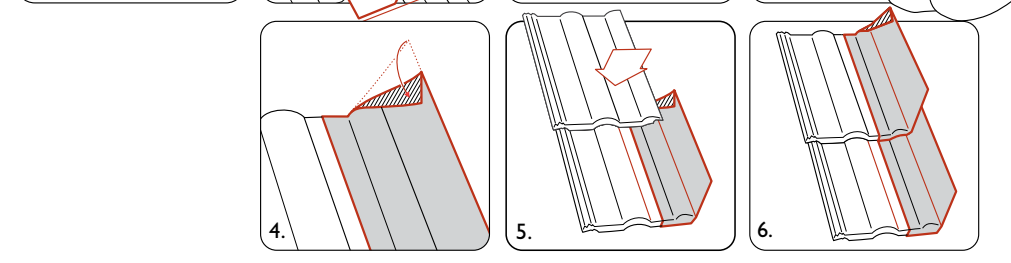
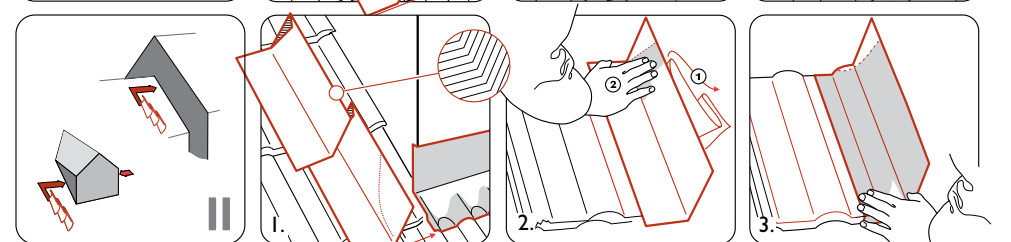
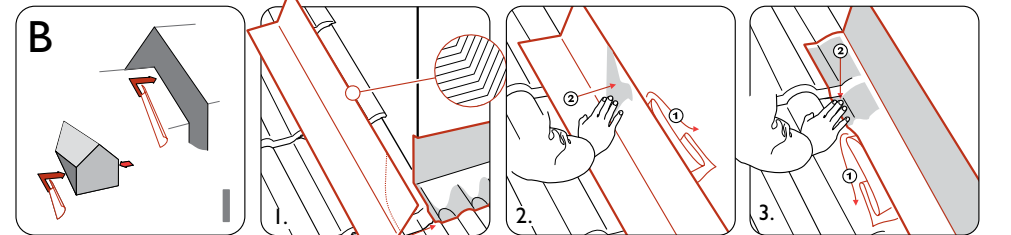
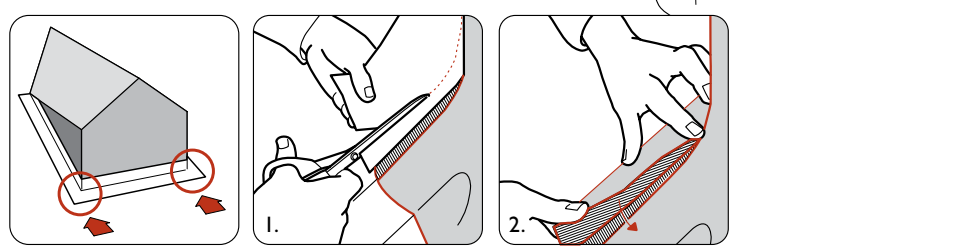
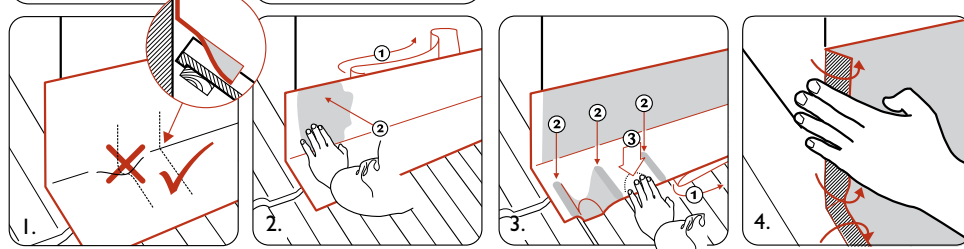
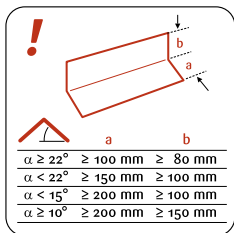
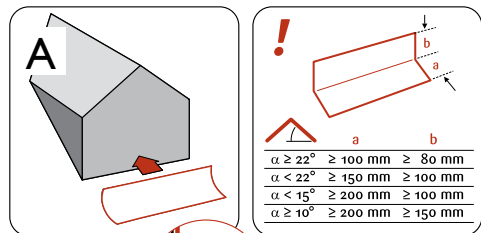
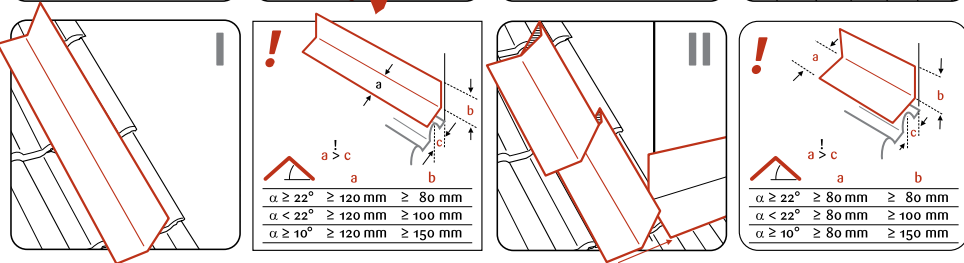
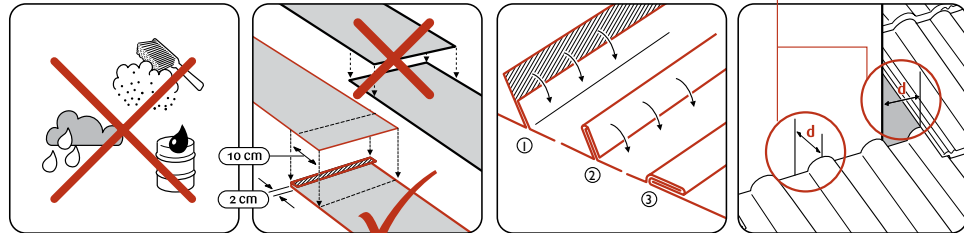
EasyFlash®

Laying Instructions



EasyFlash®

Laying Instructions



The complete range of lead-free
applications and accessories

 **EasyFlash**®

 **Wakaflex**®

 **HPaccessories**

 **Sabetoflex**

 **Haus Profi**™
The specialists in lead-free applications

Haus Profi
Unit 6F, East Midlands Distribution Centre
Short Lane, Castle Donington
Derbyshire, DE74 2HA, UK
email: info@haus-profi.co.uk
www.roof-flashing.info

tel: 0845 600 4427
fax: 01332 813 082

 [@HausProfiUK](https://twitter.com/HausProfiUK)

Haus Profi™ is a brand of **Klober Ltd.**